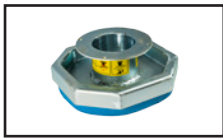


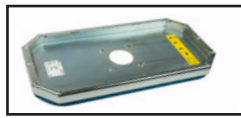
# VACWERKS VW-150 BL

- **Lifting capacity: 440 lbs (200 kg)**
- 110v Turbine Power for Handling All Products - Even Dry Cast Concrete which other systems fail to lift securely.

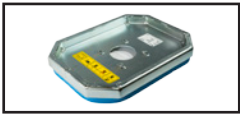
BL stands for Blower vacuum. Blower (aka turbine) technology enables us to excel in the most difficult vacuum applications. ie: handling porous materials such as dry cast concrete. Blower vacuum generates a high degree of air volume resulting in a safe and secure grip even as air is lost due to surface textures and the relative porous nature of dry cast concrete. 110v Blower vacuum is your best insurance that the vacuum will work regardless of the properties of the material you and your customers work with.



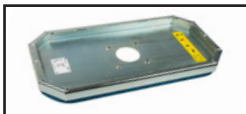
110 lbs (50 kg)  
11 x 11 in (280 x 280 mm)



330 lbs (150 kg)  
12 x 24 in (300 x 600 mm)

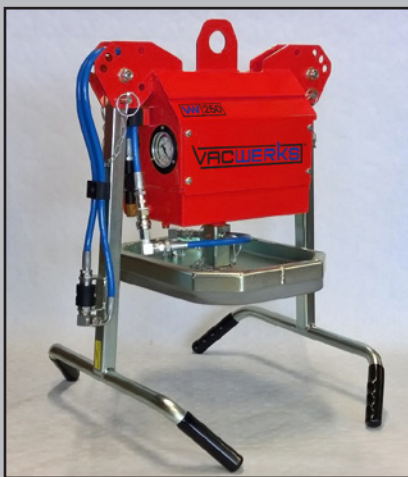


210 lbs (95 kg)  
12 x 16 in (300 x 400 mm)



440 lbs (200 kg)  
16 x 24 in (405 x 610 mm)

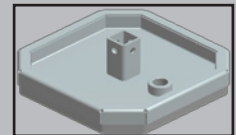
Part #	Description
CT60100	<b>VW-150 BL</b>
CT60250	<b>110 lbs (50 kg) Plate</b>
CT60150	<b>210 lbs (95 kg) Plate</b>
CT60200	<b>330 lbs (150 kg) Plate</b>
CT60260	<b>440 lbs (200 kg) Plate</b>



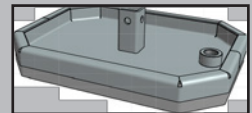
# VACWERKS VW-250 A

- **Lifting capacity: 550 lbs (250 kg)**
- 12v Battery-Powered Vacuum system
- Auto on and off to save the battery
- Vacuum pump capacity 32.5 l/min

The battery-powered VW-250-A is ideal for handling dense natural stones such as granite and bluestone as well as wet cast concrete. Not recommended for dry cast concrete (see VW-150-BL)



375 lbs (170 kg)  
11 x 11 in (280 x 280 mm)



550 lbs (250 kg)  
12 x 16 in (300 x 400 mm)

Part #	Description
CT60300	<b>VW-250 A</b>
CT60155	<b>375 lbs (170 kg) Plate</b>
CT60160	<b>550 lbs (250 kg) Plate</b>